

Paper Template for Field Robotics

John Q. Doe*

Department of Something
Somewhere University
Somewhere, AL 90210
doe@something.somewhere.edu

Coauthor

Affiliation
Address
email

Coauthor

Affiliation
Address
email

Coauthor

Affiliation
Address
email

Coauthor

Affiliation
Address
email
(if needed)

Abstract

The abstract should be one paragraph. It should summarize the problem, approach, and significance of the results.

1 Introduction

This document provides a sample template that can be used for submission of articles to Field Robotics.

The file frExample.pdf contains these instructions and illustrates the various formatting requirements your paper must satisfy. L^AT_EX users can choose between two style files: frExample.sty (to be used with L^AT_EX version 2.09) and frExamplee.sty (to be used with L^AT_EX2e). The file frExample.tex may be used as a “shell” for writing your paper. All you have to do is replace the author, title, abstract, and text of the paper with your own.

The formatting instructions contained in these style files are summarized in sections 2, 3, and 4 below.

2 General formatting instructions

The main text of your paper should be in a single column textbox 6.5 inches by 9 inches. Regular text should be in a 12 point font. Paragraphs should not be indented, and should be separated by a single line space.

Please pay attention to the instructions in section 4 regarding figures, tables, acknowledgments, and references.

*Use footnote for providing further information about author (webpage, alternative address). Acknowledgments to funding agencies should go in the **Acknowledgments** section at the end of the paper.

3 Headings: first level

First level headings are lower case (except for first word and proper nouns), flush left, bold and in point size 14. One line space before the first level heading and 1/2 line space after the first level heading.

3.1 Headings: second level

Second level headings are lower case (except for first word and proper nouns), flush left, bold and in point size 12. One line space before the second level heading and 1/2 line space after the second level heading.

3.1.1 Headings: third level

Third level headings are lower case (except for first word and proper nouns), flush left, bold and in point size 12. One line space before the third level heading and 1/2 line space after the third level heading.

4 Citations, figures, tables, references

If not using the latex template, please try to produce citations, references, and figure captions as close as possible to the example.

4.1 Citations within the text

Citations should follow the APA style (<http://www.apastyle.org/>). Unlike many scientific papers, this requires in text citation of authors' names and date of work. The corresponding references are to be listed in alphabetical order using APA reference style at the end of the paper, in the **References** section.

4.2 Footnotes

Indicate footnotes with a number¹ in the text. Place the footnotes at the bottom of the page on which they appear. Precede the footnote with a horizontal rule of 2 inches.²

4.3 Figures

All artwork must be neat, clean, and legible. Lines should be dark enough for purposes of reproduction; art work should not be hand-drawn. We recommend using either the jpg or the embedded postscript format for images and the tiff format for line drawings. If the figures contain graphs, please ensure that the axis labels are legible when printed. Figure number and caption always appear after the figure. Place one line space before the figure caption, and one line space after the figure. The figure caption is lower case (except for first word and proper nouns); figures are numbered consecutively.

Make sure the figure caption does not get separated from the figure. Leave sufficient space to avoid splitting the figure and figure caption.

¹Sample of the first footnote

²Sample of the second footnote

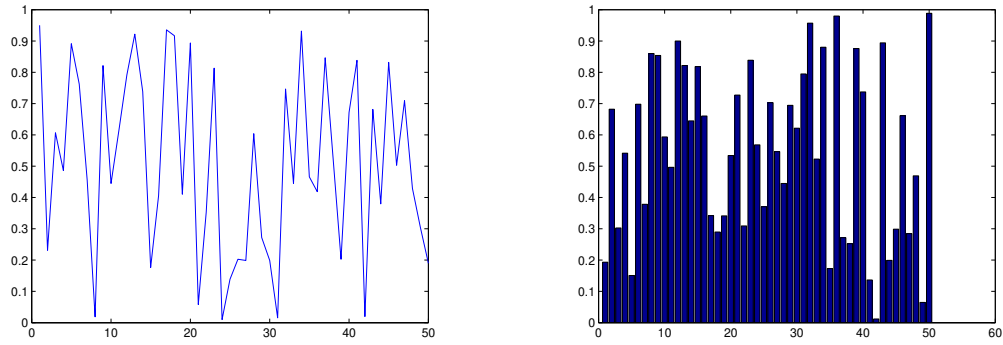


Figure 1: Line graph of random numbers (left) and bar graph of random numbers (right)

Table 1: Sample table title

	k_g	k_o	c_3	c_4	c_5
Careful/Sparse	0.334	0.597	1.101	9.621	8.170
Careful/Dense	3.124	3.195	1.094	5.899	7.318
Aggressive/Sparse	0.840	9.153	2.853	8.274	0.187
Aggressive/Dense	4.838	2.841	0.670	7.952	0.386
Hand-Tuned	0.767	0.060	0.340	2.000	0.250

4.4 Tables

All tables must be centered, neat, clean and legible. Do not use hand-drawn tables. Table number and title always appear before the table. See Table 1.

Place one line space before the table title, one line space after the table title, and one line space after the table. The table title must be lower case (except for first word and proper nouns); tables are numbered consecutively.

4.5 APA Reference Style

References follow the acknowledgments. Use an unnumbered third level heading for the references. References must be listed in the APA format (available at <http://www.apastyle.org/>). References should be in the same font size as the paper text.

Acknowledgments

Use unnumbered third level headings for the acknowledgments. All acknowledgments go at the end of the paper.